

Project Summary - 12

Installation of C.R.I. 5 HP Solar Pumping System



C.R.I. PUMPS
Pumping trust. Worldwide.



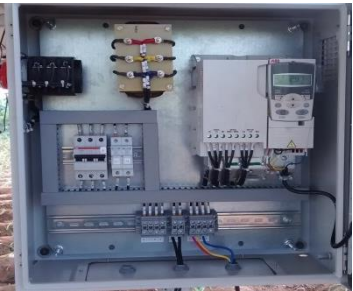
Customer Name: Mr. Muthusamy
Contact : 94881 - 41244

Location

Geo location: Bhavani Sagar, TamilNadu

Latitude: 11.480 N

Longitude: 77.125 E



5 HP Solar Pump Control Unit



Pile Foundation

System Components

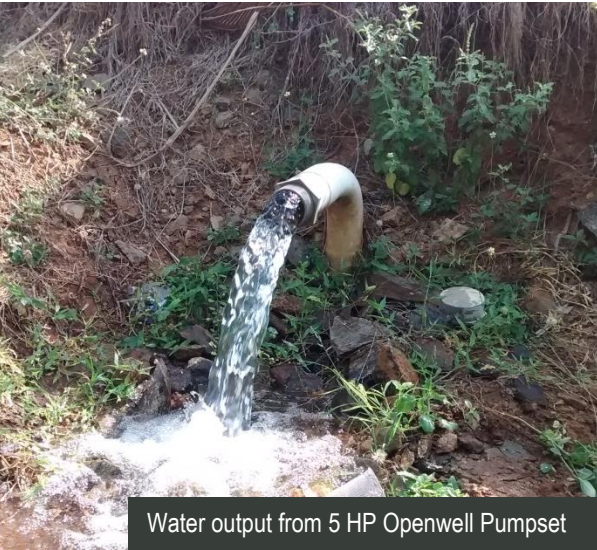
- 310Wp x 17 Nos. *(5270Wp) Multi-Crystalline Solar PV Modules
- 5 HP Solar Pump Control Unit
- Fixed Tilt Ground Mounted Module Mounting Structures, North to South (Solar PV module Top to Bottom)
- CSM-2 Openwell Submersible 5HP 3 Phase, 380 V, 50 Hz
- Area occupied: 31 Sq. meters of shadow free area
- Tilt Degree: 11° as per the Geo location of the installation



Back Post & Parlines are in Same Line



Front Post & Parlines are in Same Line



Water output from 5 HP Openwell Pumpset



Agriculture Land [4 Acres]

Results :

- 5 LPS, 18,000 LPH, 99,000LPD* at 30 m* of Total Dynamic Head.

Payback Period :

- Per year Running Cost by EB Grid Supply: ■ Rs.68,062/-* Payback period 7-8 Years*
- Per year Running Cost by Diesel Gen / Diesel Pumpset: Rs.97,200/-* Payback period 2-3 Years*

* Conditions apply



C.R.I. PUMPS
Pumping trust. Worldwide.

TOLL FREE 1800 200 1234 | www.crigroups.com



www.facebook.com/cripumps