



C.R.I. PUMPS

Pumping trust. Worldwide.



ONE STOP PUMPING SOLUTIONS...



C.R.I. PUMPS

Pumping trust. Worldwide.

T H E B E G I N N I N G

of C.R.I., way back in 1961, was a resolute attempt to produce a few irrigation equipments using the limited facilities of an in-house foundry. Eventually the founder's dream was coming true as the small production unit he started kept growing rapidly. Now, after more than five eventful decades, it is an enormous, widely reputed organization, which produces more than 1500 varieties of perfectly engineered pumps and motors and sells its products in numerous countries spread across 6 continents.

C . R . I . I S O N E A M O N G

the few pioneers in the world to produce 100% stainless steel submersible pumps. Having achieved a record production capacity of over 2 million pumps per annum, today C.R.I. is rubbing its shoulders with the best brands in the world, with advanced technology and safety standards as its hallmarks.

T H E I N F R A S T R U C T U R E

of C.R.I. is pretty comprehensive with state-of-the-art machineries and high potential in-house R&D recognised by the ministry of science and technology, Govt. of India - all within its own covered area of 300,000 square metres. The production environment is accredited with ISO 9001 & 14001 certifications and the products are CE, UR/UL, IEC, TSE & ISI certified. The R&D team always stays in tune with the changing scenario and seldom fails in coming up with outstanding solutions every time.

N E E D L E S S T O S A Y ,

behind this legendary growth lies the untiring, innovative, enthusiastic and dedicated team work. and, of course, a flawlessly maintained value system too. The name C.R.I. itself encapsulates the company's ethos: " Commitment, Reliability, Innovation".





C.R.I. PUMPS
Pumping trust. Worldwide.

Vision, Mission and Values

To be the industry leader providing best - in - class fluid management solutions to individual and institutional customers and societies in our chosen markets.

We will achieve this through our dedicated efforts to enhance the welfare of all our stakeholders and by living by our values of **commitment, reliability** and **innovation**.



VERTICAL MULTISTAGE INLINE PUMPS

MV SERIES



Specifications

Max. Flow	: 200 m ³ /hr
Max. Head	: 320 m
Max. Liquid Temp	: 120°C
Operating Pressure Range	: 3.3 Mpa (33 bar)

Applications

Pressure Boosting | Pumping Clean Liquid in Industries |
Reverse Osmosis & DM Plant | Boiler Feed | Fire Fighting
Hot & Cold Water Circulation | Industrial Washing.

HYDRO PNEUMATIC SYSTEM

MVHS SERIES



Specifications

Max. Flow	: 1200 m ³ /hr
Max. Head	: 160 mtrs
Max. Power	: 110 kW
Max. Temperature	: 70°C

Applications

Hotels | Apartments | Commercial buildings |
Industries and Hospitals | etc.,

PRESSURE BOOSTING SYSTEMS

ISOBARIC SERIES



Specifications

Max. Flow	: 80m ³ /hr
Max. Head	: 65m
Max. Power	: 7.5 kW
Max. Liquid Temperature	: 70°C
Manifold Material	: G.I / SS

Applications

Water pressure boosting | Residential Buildings |
Apartments Bungalows | Cottage & Villas | Schools |
Hospitals | Industries | Liquid transfer |
Sprinkler irrigation systems | etc.,

IM SERIES



VERTICAL MULTISTAGE PUMPS

Specifications

Max. Flow	:	4 m ³ /hr
Max. Head	:	120 m
Max. Liquid Temp	:	120° C

Applications

Water Treatment | Industrial Pressure Boosting | Washing System |
 Water Supply | High Rising Building | Garden Sprinkler | HVAC |
 Fire Fighting System | Aquaculture | ect.,

VERTICAL MULTISTAGE INLINE PUMPS

MVSS SERIES



Specifications

Max. Flow	:	5 m ³ /hr
Max. Head	:	36 bar (360 m)
Max. Liquid Temp	:	120°C

Applications

Pressure Boosting | High pressure water supply |
 Reverse Osmosis & DM Plant | Boiler Feed |
 Water treatment plants | Industrial Washing.

VERTICAL MULTISTAGE PUMPS

MTC SERIES



Specifications

Max. Flow	:	4 m ³ /hr
Max. Head	:	211 m
Max. Liquid Temp	:	120° C

Applications

Water Treatment | Industrial Pressure Boosting | Washing System |
 Water Supply | High Rising Building | Garden Sprinkler | HVAC |
 Fire Fighting System | Aquaculture | ect.,

IMMERSIBLE PUMPS - SINGLE SHAFT - COUPLED TYPE**VDS/VDC SERIES****Specifications**

Max. Flow	: 20 m ³ / hr
Max. Head	: 240 m
Max. Power	: 18.5 kW
Max. Liquid Temp	: 90°C

Applications

Retro fitting Wire and other conventional machines
 Cutting Printing machines | Chilling units and industrial
 washing machines | Water cooling emulsions | cooling |
 Cutting oils | Spark machine tools | Filtering systems
 Boring | Milling | Grinding Wire cutting | Turning |
 Chilling | Condensate System | Wash and Clean

IMMERSIBLE PUMP - CANTILEVER**VDK SERIES****Specifications**

Max. Flow	: 9.6 m ³ / hr
Max. Head	: 9 m
Max. Power	: 1.1kW
Max. Liquid Temp	: 90°C

Applications

Boring | Milling | Sowing Grinding | Turning |
 Chilling | Filtration

SUBMERSIBLE SEWAGE PUMPS**i-TECH SERIES****Specifications**

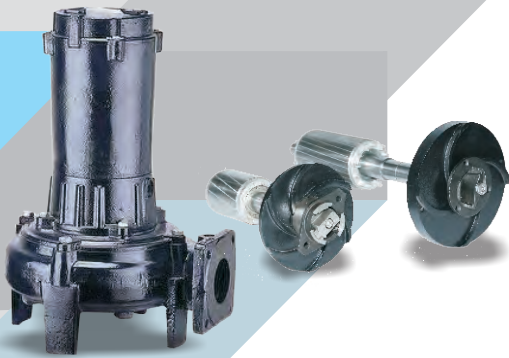
Max. Flow	: 1800 m ³ /hr
Max. Head	: 65 m
Max. Power	: 52 kW
Max. Liquid Temp	: 90°C
Degree of Protection	: IP 68
Motor Type	: Dry (Rewind able)
Impeller Type	: Vortex; Cutter; Single/Multi channel; Semi Open
Max.Free Passage	: 165 mm

Applications

Pumping of waste from houses | Hotels | Commercial
 buildings | Industrial Waste Water (Effluent, Sewage,
 Ash-Water, etc.) Mines pumping sewage Water
 from stock farm

SUBMERSIBLE CUTTER PUMPS

GT SERIES



Specifications

Max. Flow	: 20 m ³ /h
Max. Head	: 23 m
Max. Power	: 9.5 kW
Max. Speed	: 2900 rpm

Applications

Pumping of waste from houses/hotels/commercial buildings | Industrial Waste Water (Effluent, Sewage, ash-water, etc.) | Mines pumping sewage Water from stock farm

SUBMERSIBLE MIXER

MD / TP SERIES



Specifications

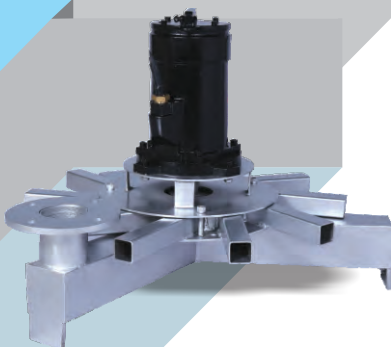
Max. Flow	: 6702 m ³ /h
Max. Head	: 70 m
Max. Power	: 18.5 kW

Applications

Anoxic/anaerobic tanks and activated sludge at STP. | Mixing of sewage wet wells | Reception tanks and post-digestion tanks at bio gas facilities | Liquid Manure storage tanks at dairy, hog, and poultry farms | Waste processing at slaughter houses, poultry abattoirs, fish processing plants, etc

SUBMERSIBLE AERATOR

AR SERIES



Specifications

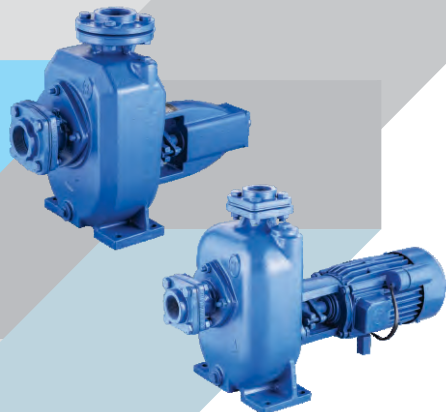
Power	: 5.5 kW
Max Air Volume	: 103 m ³ /hr
Max. Total Oxygen input	: 5.9 (kg. Q/h)

Applications

Biological process | Industrial ETP aeration process stabilization and equalization tank | Fish farms | STP/ETP

SURFACE WASTE WATER PUMPS

SMB / SP SERIES



Specifications

Max. Flow	: 270 m ³ /hr
Max. Head	: 34 m
Max. Power	: 18.5 kW
Speed	: 2880/1440 rpm

Applications

Pumping of Domestic Sewage (Polluted water, Effluent, Storm water)
Industrial Waste Water (Effluent, Sewage, ash-water, etc.)
Water from Marine (Docks, Ports and Vessels)
Dewatering from Construction
(Foundation, Trenches and Pits)

CENTRIFUGAL MONO-BLOCK PUMPS

CT / BP SERIES



Specifications

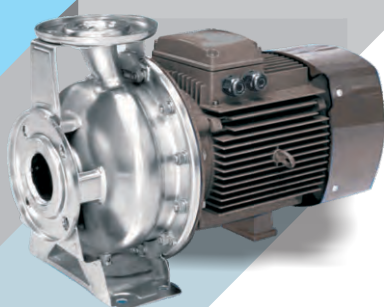
	CT	BP
Max. Flow	: 24 m ³ /h	121 m ³ /h
Max. Head	: 42 m	70 m
Max. Power	: 1.5 kW	15 kW
Speed	: 2900 rpm	2900 rpm

Applications

Domestic | Industries | Irrigation | Civil application
Farms | Drip & Sprinkler Systems | Gardens
Water treatment plants

SS - CENTRIFUGAL MONO-BLOCK PUMPS

CT SERIES



Specifications

Max. Flow	: 120m ³ /h
Max. Power	: 18.5 kW
Speed	: 2900 rpm
Degree of Protection	: IP55
Insulation Class	: "F"

Applications

Irrigation & Industrial water supply | HVAC &
Pressure boosting units | Food processing &
Washing systems etc.,

SS - CENTRIFUGAL MONO-BLOCK PUMPS**CTS SERIES****Specifications**

Max. Flow	: 12.0 m ³ /h
Max. Head	: 3.55 bar
Pump Casing	: SS 304
Impeller	: SS 304
Shaft	: SS 304

Applications

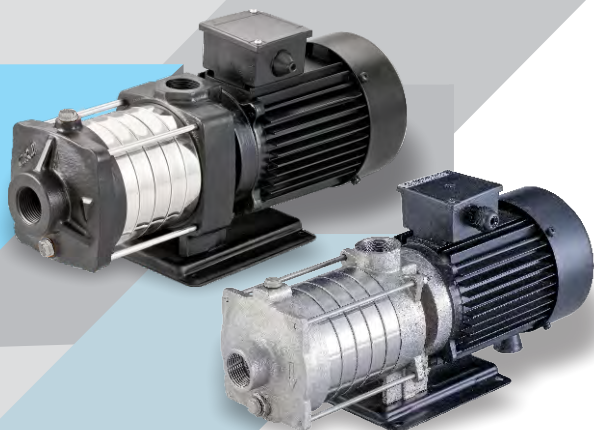
Domestic | Irrigation | Industrial Water system | Houses |
 Small Farms | Gardens | Domestic Pressure Boosting |
 Car Washing | Industries & Drinking Water Supply

SS - JET SELF PRIMING PUMPS**JTS SERIES****Specifications**

Max. Flow	: 3.0 m ³ /h
Max. Head	: 4.5 bar
Pump Casing	: SS 304
Impeller	: SS 304 / Noryl
Shaft	: SS 304
Sealing	: Mechanical Seal

Applications

Houses | Small | Farms | Gardens | Domestic Pressure
 Boosting | Car Washing | Industries & Drinking
 Water Supply

HORIZONTAL MULTISTAGE PUMPS**MH SERIES****Specifications**

Max. Flow	: 14 m ³ /h
Max. Head	: 50 m
Max. Power	: 2.2 kW
Max. Liquid Temp	: 90°C

Applications

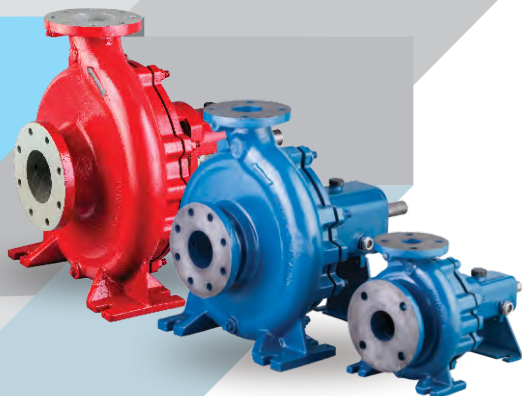
Pumping of clean liquids in industry | Air refreshing and heater
 device | Small water works & Car Washing | Cooling Systems |
 Air Conditioning system | Fertilization and metering system |
 Industrial & domestic water pressure boosting
 and distribution.

HORIZONTAL MULTISTAGE PUMPS**MHD SERIES****Specifications**

Max. Flow	: 28 m ³ /h
Max. Head	: 65 m
Max. Power	: 2.2 kW
Max. Liquid Temp	: 104°C

Applications

Pumping of clean liquids in industry | Air refreshing and heater device | Small water works & Car Washing Cooling Systems | Air Conditioning system | Fertilization and metering system | Industrial & domestic water pressure boosting and distribution.

END SUCTION CENTRIFUGAL PUMPS**ECW SERIES****Specifications**

Max. Flow	: 550 m ³ /hr
Max. Head	: 100 m
Max. Power	: 200 kW
Max. Speed	: 500 - 3500 rpm

Applications

Water Supply, HVAC systems | Swimming Pools fountains | Food | Sugar | Paper | Pulp | Chemical | Cement | Construction Industries | Power Plant | Steel | Water Supply | Irrigation | Pressure Boosting |

CLOSE COUPLED PUMPS**CCW SERIES****Specifications**

Max. Flow	: 550 m ³ /hr
Max. Head	: 100 m
Max. Power	: 45 kW
Max. Speed	: 1450 - 2900 rpm

Applications

Water Supply, HVAC systems | Swimming Pools fountains | Food | Sugar | Paper | Pulp | Chemical | Cement | Construction Industries | Power Plant | Steel | Water Supply | Irrigation | Pressure Boosting |

VS I VC SERIES**VERTICAL VOLUTE CASING PUMPS****Specifications**

Max. Flow	: 630.0 m ³ /hr
Max. Head	: 105 m
Max. Power	: 132.0 kw
Max. Liquid Temp	: 105°C

Applications

Water Supply | HVAC systems | Mines | Refiners | Marine |
 Power Plant | Water Supply | Irrigation | Steel Plant |
 Cooling Systems | Schools | Hospital | etc.,

SCW SERIES**HORIZONTAL SPLIT CASE PUMPS****Specifications**

Max. Flow	: 2500 m ³ / hr
Max. Head	: 170 m
Max. Working Temp	: 104°C
Max. Operating Data Inlet Size	: 500mm
Max. Outlet Size	: 1200mm

Applications

Water Supply | HVAC systems | Mines | Refiners |
 Marine | Power Plant | Water Supply | Irrigation |
 Steel Plant | etc.,

VT SERIES**VERTICAL TURBINE PUMPS****Specifications / Operational Limits**

Max.Flow	: 1485 m ³ /hr
Max.Head	: 150 m
Max.Working Temperature	: 104°C

Suction Depth

40 m for Small Size up to - 150 mm Coloum Assy
 30 m for Large Size up to - 400 mm Coloum Assy

Applications

Water Supply | HVAC Systems | Mines | Refiners |
 Marine | Power Plant | Water Supply | Irrigation |
 Steel Plant | Cement & Process | etc.,

ECC SERIES



END SUCTION CENTRIFUGAL CHEMICAL

Specifications

Max. Flow	: 1020 m ³ /hr
Max. Head	: 198 m
Max. Power	: 150 kW
Max. Pressure	: 10/16 bar

Applications

Handling Organic & Inorganic liquids | Chemical & Process Transfer |
General Refinery Services | Erosive | Corrosive Liquors |
Demineralised Water | Condensates | Distillation Plant Liquors

ECP SERIES



END SUCTION CENTRIFUGAL PAPER / PULP

Specifications

Max. Flow	: 80 m ³ /hr
Max. Head	: 100 m
Max. Power	: 340 kW
Max. Speed	: 700 / 1800 rpm

Applications

Food & beverage industry | De-watering & De-inking Liquors
Corrosive & Non-corrosive liquors | Chemical/Process Effluents
Sugar Industries | Power generation & Steel | Brewing & bottling plant Liquors
Handles Paper & Pulp stock, Consistencies - Upto 8 %

ECH SERIES



END SUCTION CENTRIFUGAL HARD METAL SLURRY

Specifications

Max. Flow	: 1500 m ³ /hr
Max. Head	: 50 m
Max. Power	: 220 kW
Max. Speed	: 400 / 2000 rpm

Applications

All Abrasive Slurries & Sludges | Mineral & Ore Processing
Cyclone Feed & Under - flow | Tailings Disposal | Lime & Clay Slurries
Classifier & Thickener Under-flow | Dewatering, Wash down & Sluicing
High Density Slurries & Sludges | Coal & Ash Slurries | Beach (Sand) Recovery
Handles % age Solids by wt. upto - 65 %

ECR SERIES



END SUCTION CENTRIFUGAL RUBBER LINED SLURRY

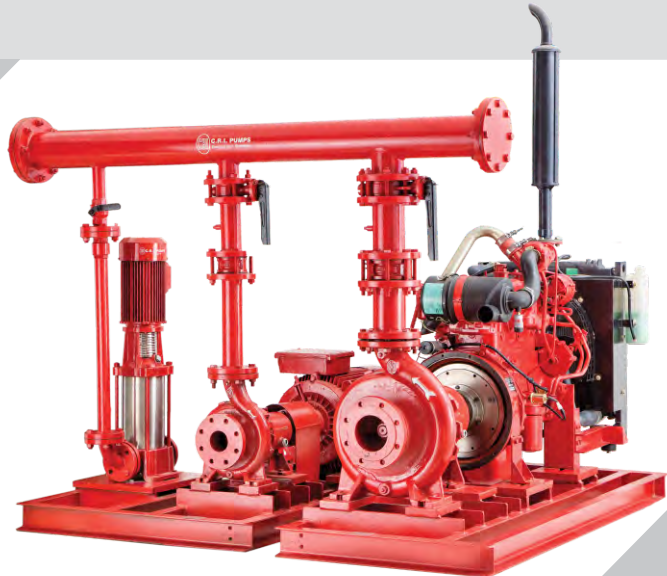
Specifications

Max. Flow	: 3200 m ³ /hr
Max. Head	: 95 m
Max. Power	: 220 kW
Max. Speed	: 700 / 1800 rpm

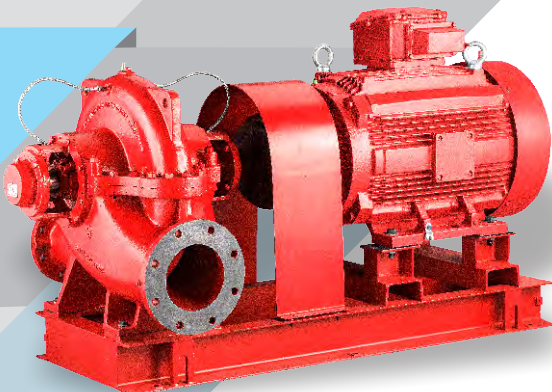
Applications

All Abrasive Slurries & Sludges | Mineral & Ore Processing
 Cyclone Feed & Under - flow | Tailings Disposal | Lime & Clay Slurries
 Classifier & Thickener Under-flow | Dewatering, Wash down & Sluicing
 High Density Slurries & Sludges | Coal & Ash Slurries | Beach (Sand) Recovery
 Handles % age Solids by wt. upto - 65 %

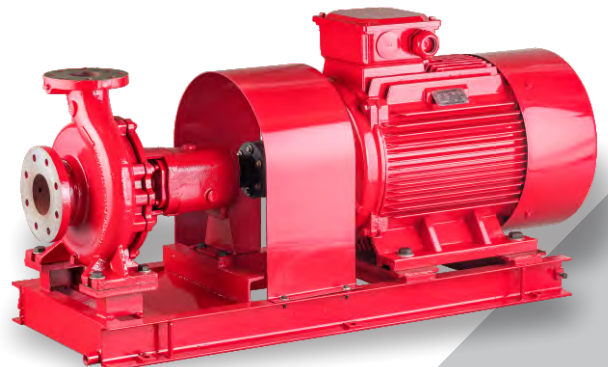
FIRE FIGHTING SYSTEM



HORIZONTAL SPLIT CASE PUMPSET



END SUCTION CENTRIFUGAL PUMPSET



W I N N I N G W A Y S

When you have a good thing going it is quite in the fitting of things that recognitions come our way. Several prestigious awards, which decorate our shelf, say it all. These rewards not only acknowledge our position as a leader in the water pump industry but also serve as reminders about what the customer expects from a winner. And we, as ever, have our ears perfectly tuned to customer expectations.





The background of the entire page is a detailed technical drawing in a light gray color on a black background. It features various geometric shapes, including concentric circles, arcs, and straight lines, some of which are intersected by crosshairs. There are also hatched areas and small circles, suggesting a complex mechanical or architectural plan.

C.R.I. PUMPS PRIVATE LIMITED

Regd. Office: 7/46-1, Keeranatham Road, Saravanampatty, Coimbatore - 641 035. Tamilnadu, INDIA.
Phone : +91-422-7117000 Fax : +91-422-7117005, E-mail : bcsmkt@cripumps.com • www.crigroups.com
Toll Free 1800 121 1243