



**C.R.I. PUMPS**

Pumping trust. Worldwide.

## C.R.I. PUMPS (PVT) LIMITED

7/46-1, Keeranatham Road, Saravanampatty, Coimbatore - 641 035. India.  
Phone : +91 44 40300306 0422 3008119 / 3027000 Fax : +91 422 3911600  
E-mail : industrialpumps@cripumps.com Website : www.crigroups.com

### BOMBAS C.R.I. ESPAÑA, S.L.

Poligono Industrail El.Bony Calle 31, No. 137, 46470  
Catarroja (Valencia) **Spain**.  
Tel : +34-96 1842 974, Fax : +34-96 1842 977  
e-mail : cri@bombascri.es website : www.bombascri.es

### BOMBAS C.R.I. ESPAÑA S.L. UNIPERSONAL

Via Linara 8, 82030, Limatola-BENEVENTO-Italy  
Tel : +39. 0823 586 904  
e-mail : cri@bombascri.it website:www.crifluidsystems.com

### C.R.I. BOMBAS HIDRÁULICAS LTDA

Av. Rodrigo Fernando Grillo, 457, Jd. Manacas,  
CEP - 14.801-534, Araraquara - SP, **Brasil**.  
Fone : +55-16-3331 1099, Fax : +55-16-3331 5344  
e-mail : cri@cribombas.com.br website : www.cribombas.com.br  
Filial : Jabotão dos Guararapes-PE, Brasil.  
Fone : (81) 3093-9620, Fax : (81) 3093-9600.

### C.R.I. PUMPS S.A. (PTY) LIMITED

P.O. Box 6292, Halfway House, Midrand - 1685,  
Johannesburg, **South Africa**.  
Tel : +27-11-8058631 / 32, Fax : +27-11-8058630  
e-mail : cri-za@crifluidsystems.com website : www.cripumps.co.za  
Branches : Capetown : + 27-21-9499122  
Durban : + 27-31-7001814

### C.R.I. POMPA SANAYİ VE TİCARET LIMITED ŞİRKETİ

10032 Sk, No:12 A.O.S.B. 35620 Çiğli-Izmir-Türkiye.  
Tel : +90-232-328-328 22 99, Fax : +90-232-328 23 33  
e-mail : cri@cripompa.com website : www.cripompa.com

### PT. CRI FLUID SYSTEMS

Kawasan Industri dan Pergudangan Marunda Center  
Blok B No: 23 Jalan Marunda Makmur, Segaramakmur, Tarumajaya,  
Kab. Bekasi, Jawa Barat 17211, **Indonesia**, Ph : 021-8999 7558  
Email : sales.id@crifluidsystems.com Website : www.crifluidsystems.com

### C.R.I. FLUID SYSTEMS USA LLC

4655 Wright Road, Ste. 140, Stafford, TX 77477, USA.  
Tel : 832-430-4660 Email : sales@crigroups.us  
Website : www.crigroups.us

### C.R.I. PUMPS (FZC)

P.O. Box 7988, A4-12 SAIF-Zone, **Sharjah**, U.A.E.  
Tel : +971-6-5573041 (3 Lines), Fax : +971-6-5573042  
e-mail : cri-uae@crifluidsystems.com website : www.crifluidsystems.com

### C.R.I. FLUID SYSTEMS INC.,

Polyland Industrial Subdivision, Warehouse #3, Block 4,  
Kendex St., Bo. Iba, Meycauyan, Bulacan, **Philippines**. Zip-3017.  
Phone : +63 44 762 8887 / +63 44 802 6199, Fax : +63 44 762 8883.  
e-mail : sales.ph@crigroups.com  
Website : www.crifluidsystems.com

### C.R.I. FLUID SYSTEMS (BD) LTD.,

Ground Floor, Unit-1 Holding No 212, Tejgaon Industrial Area,  
Tejgaon - Gulshan Link Rd, Dhaka - 1208, **Bangladesh**  
Website : www.crifluidsystems.com

### C.R.I. PUMPS (Shanghai) Co., Ltd.

Room 902, Building No.7, 1855 Qixin Road,  
Minhang District, **Shanghai** - 201101. China.  
Tel : +86-21-54405082, Fax : +86-21-54405083  
e-mail : cri@bombascri.com.cn  
website : www.bombascri.com.cn

### SUZHOU C.R.I. PUMPS CO., LTD.

No.198, Shexi Road, Beishe Community, Lili Town,  
Wujiang District, Suzhou City,  
Jiangsu Province, China.  
Tel: +86-512-63433668 | Fax : +86-512-634 33667,  
e-mail : cri@crisuzhou.com.cn | website : www.bombascri.com.cn

## INDUSTRIAL PUMPING SOLUTIONS

## COMPLETE RANGE CATALOGUE

April 2019. Copyright (C.R.I. Pumps). Subject to change without notice.

www.crigroups.com



\*For specific model only

An ISO 9001 & ISO 14001 Company



# The Company with Commitment Reliability Innovation

C.R.I. - the name itself encapsulates the company's ethos: "Commitment, Reliability, and Innovation". Being a global player in the pump industry, C.R.I. has evolved as a leader in fluid management systems with strong presence in Pumps, Valves, Pipes, IoT Drives & Controllers, Wires & Cables, Solar Systems and Motors. C.R.I. has over 6000 products catering to the flow management needs across various industries like Solar, Waste Water, Building, Pharma, Oil & Gas, Chemical, Power, Machine Tool, Paper & Pulp, Mining, Process Industries, Agriculture, Residential, Community Water Supply, Food & Beverage applications. The company has conquered the global market by extending to over 120 countries with 11 wholly owned subsidiaries. Today, C.R.I. is a brand that the world trusts when it comes to Fluid Management Solutions.

## Unique features of C.R.I.:

- More than 5 decades of engineering expertise.
- A formidable Global Player with 6000 products sold through 20000 outlets over 120 countries.
- One among the few leaders in the Industry to produce 100% stainless steel pumps.
- Total production area over 3 lakh square meters, fully equipped with state-of-the-art machinery and adapting latest manufacturing processes and techniques.
- Products are with international quality certifications... CE, UR, UL, TSE, NSF, INMETRO, EIL, IBR, API, PED, ISI, ISO 9001, ISO 14001 and OHSAS 18001.
- Winner of EEPC (Engineering Export Promotion Council) India Award for 14 times.
- Winner of National Energy Conservation Award for 4 years.
- Strong R & D wing "Fludyn Advanced Technology Centre" recognized by Ministry of Science & Technology, equipped with the latest development tools & software's.
- Fully mechanized and automated Foundry with State-of-the-art technology



## ECW SERIES EN733 - END SUCTION WATER PUMP

### APPLICATIONS

- Water supply
- Heating & air conditioning system
- Fire fighting
- Pressure boosting
- Non aggressive water & liquid
- Breweries
- Fountain & irrigation
- Utility water

### SALIENT FEATURES

- Optimized Hydraulics design
- Common housing for gland packing & Mechanical seal versions
- Engineered Bearing frame
- Ejecting bolts provision
- Replaceable Wear rings
- Counter lock nut with double flat and helical groove option

### OPERATING DATA

• Flow	:	Upto 600 m <sup>3</sup> /h
• Head	:	Upto 160 m
• Outlet size	:	Upto 150 mm
• Liquid temp.	:	Upto 140°C*
• Pressure	:	Upto 16 bar
• MOC	:	CI, Bronze, SS

Note : \* Standard models upto 90°C , Contact manufacturer for high temperature



Wireless pump health monitoring features available



## CCW SERIES CLOSE COUPLED WATER PUMP

### APPLICATIONS

- Water transport and supply
- Water treatment plants
- General process
- Industrial pressure boosting
- Fire & fighting
- HVAC system
- Cooling towers

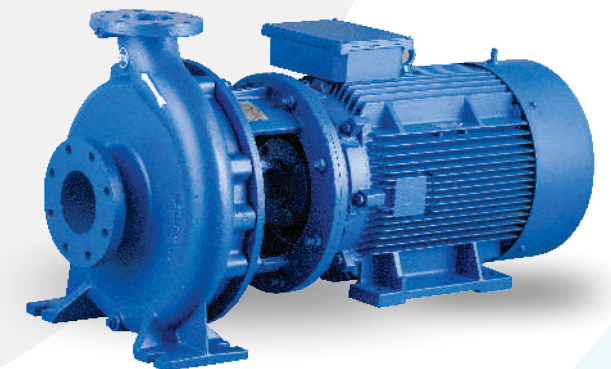
### SALIENT FEATURES

- Conical housing with wear ring
- Back Pull out Design
- Stub Shaft Design minimizes Deflection
- No Need for Coupling Alignment
- Optimized hydraulics design
- Contoured lock nut with double flat and helical groove option
- Compact, Easy And Quick Installation

### OPERATING DATA

• Flow	:	Upto 550 m <sup>3</sup> /h
• Head	:	Upto 95 m
• Outlet size	:	Upto 150 mm
• Liquid temp.	:	Upto 140°C*
• Pressure	:	Upto 16 bar
• MOC	:	CI, Bronze, SS

Note : \* Standard models upto 90°C , Contact manufacturer for high temperature



Wireless pump health monitoring features available



Pumping Solutions, Engineered.



# SCW SERIES HORIZONTAL SPLIT CASE PUMP

## APPLICATIONS

- Water supply
- Irrigation
- Fire Protection
- HVAC systems
- Oil and petrochemical process
- Water treatment process
- Sea water desalination
- Cooling tower

## SALIENT FEATURES

- Top pull out casing design and Separate bearing housing
- Air release valve
- Replaceable Wear rings at both sides of impeller
- Dynamically balanced double suction Low NPSH impeller
- Common housing for gland packing / Mechanical seal option
- Options for single & double volute
- Module design for maximum interchangeability of rotating units

## OPERATING DATA

• Flow	:	Upto 4200 m³/h
• Head	:	Upto 122m
• Outlet size	:	Upto 450 mm
• Liquid temp.	:	Upto 140°C*
• Pressure	:	Upto 16 bar
• MOC	:	Cl, Bronze
Optional	:	CF8M/CD4 MCu

Note : \*Contact manufacturer for temp > 90°C



# ECC SERIES ANSI B 73.1 - END SUCTION CHEMICAL PUMP

## APPLICATIONS

- Chemical & petrochemical
- Erosive / corrosive liquor
- General refinery
- Dying & paint
- Pharmaceutical
- Brewing & bottling
- Demineralized water
- Desalination
- Food & beverage
- Condensates

## SALIENT FEATURES

- Integrated connecting frame with bearing cover
- Back Pull out Design
- Graphite impregnated PTFE / Single or Double Mechanical seal
- External shim set arrangemnt for impeller clearance adjustment
- Large oil sump with oil splash / oil bath lubrication
- Accurately machanical contoured semi open impeller and casing
- Cooling jackets for high temperature applications

## OPERATING DATA

• Flow	:	Upto 720 m³/h
• Head	:	Upto 110m
• Solid handling sizes	:	Upto 52 mm
• Outlet size	:	Upto 200 mm
• Liquid temp.	:	Upto 260°C*
• Pressure	:	Upto 16 bar**
• MOC	:	SS, Hi - Alloy steel

Note : \* For additional specifications contact manufacturer / \*\* Counter flanges provided > 16 bar



Pumping Solutions, Engineered.

COMMITMENT | RELIABILITY | INNOVATION

# ECP SERIES END SUCTION PROCESS PUMP

## APPLICATIONS

- Paper stock
- Fibrous pulp & effluent
- Fibrous effluent
- Waste water
- De-watering & de-inking
- Solid entrained liquor
- Chemical / process liquor
- Food process
- Sugar process
- Abattoir

## SALIENT FEATURES

- Back Pull out Design
- Integrated connecting frame with bearing cover
- External shim set arrangment for impeller clearance adjustment
- Large oil sump with oil mist / Oil bath lubrication
- Graphite impregnated PTFE / Single or double mechanical seal
- Bull nose type open impeller
- Accurately contoured suction wear plate

## OPERATING DATA

• Flow	:	Upto 2500 m³/h
• Head	:	Upto 100 m
• Solid handling sizes	:	Upto 95 mm
• Outlet size	:	Upto 350 mm
• Liquid temp.	:	Upto 140°C*
• Pressure	:	Upto 16 bar
• MOC	:	SS, Hi - Alloy Steels & Cl

Note : \* Contact manufacturer for temp > 90°C



# ECH SERIES END SUCTION SLURRY PUMP

## APPLICATIONS

- Mineral & ore processing
- Cyclone feed & under - flow
- Tailings disposal
- Lime & clay slurry
- Classifier & thickener under - flow
- De-watering, wash down & sluicing
- High density slurry & sludge
- Coal & ash slurry
- Beach ( sand ) recovery

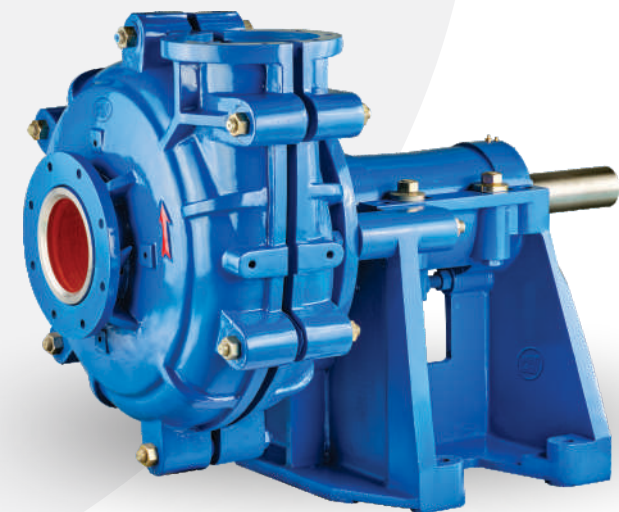
## SALIENT FEATURES

- Back Pull-Out Design
- 360 degree rotation tangential discharge casing
- Hard metal and wide passage closed impeller
- Graphite impregnated PTFE / Single or Double mechanical seal
- Large oil sump with oil mist / oil bath lubrication
- Jack screw arrangement for impeller clearance adjustment
- Twin casing (ECHT), Rubber lined casing (ECHR), Dredging (ECD) configuration also available

## OPERATING DATA

• Flow	:	Upto 3000 m³/h
• Head	:	Upto 96 m
• Solid handling sizes	:	Upto 127 mm
• Outlet size	:	Upto 350 mm
• Liquid temp.	:	Upto 140°C*
• Pressure	:	Upto 16 bar
• MOC	:	Hi-Chrome, Cl with 2% NI

Note : \* Contact manufacturer for temp > 90°C



Pumping Solutions, Engineered.

# VERTICAL SUMP PUMP

## ECCV, ECPV, ECHV & ECWV SERIES

### ECCV

END SUCTION CHEMICAL PROCESS PUMP  
The ECCV assures high performance with unmatched efficiency and increased reliability.

### ECPV

END SUCTION PROCESS PUMP  
ECPV is designed to deliver high performance with high efficiency and increased reliability, this series reduces maintenance cost and downtime.

### ECHV

END SUCTION SLURRY PUMP  
The ECHV is manufactured to retain high performance with highly abrasive erosive slurry and sludge handling capabilities.

### ECWV

END SUCTION WATER PUMP  
ECWV series is highly sophisticated machinery and technology are employed with the manufacture of these pumps using quality raw material to ensure the long life.

#### SPECIFICATION

- Setting height upto 5mtr\*
- Direct driven\* / Belt driven option\*

Note : \* Contact manufacturer

#### APPLICATIONS

- Non API 610 Chemical & Process Applications
- General Refinery
- Erosive / Corrosive Liquors
- Distillation Plant Liquors

#### APPLICATIONS

- Corrosive & Non Corrosive Effluents
- Sugar Industries
- Low Density Slurries & Sludges

#### APPLICATIONS

- Power generation & Steel
- All Abrasive slurries & sludges
- Mineral & Ore Processing
- Beach (Sand) Recovery Dispersal & Coal, Ash Slurries
- Metal waste separation / Recovery

#### APPLICATIONS

- Water supply / Heating and Air conditioning System
- Fire fighting / Pressure boosting /
- Non-aggressive water and liquids
- Handling of water in process Industries



# DRV SERIES DEWATERING PUMP

#### APPLICATIONS

- Open pit mine & underground mine
- Quarry / Tunnel
- Power plant - ash pit removal
- Metal processing
- Industrial wastewater
- Emergency flood water drainage
- Construction site
- Flood water / Reservoirs
- Sewage bypass
- Ground water

#### SALIENT FEATURES

- Connection cover with cable gland
- In-built cooling jacket
- H class insulation with TOP (Thermal overload protection)
- Closed / Semi open Hi-chrome impeller & rubber mould diffusers
- Two independent mechanical seal
- Strainer with damper fitting
- Pump static components in aluminium casting

#### MOC DESCRIPTION

Impeller	: Hi-chrome
Diffuser	: Rubber moulded Aluminum
Castings	: Aluminum
Outer shell	: Stainless steel 304
Mechanical seal	: SIC/SIC
Shaft	: Stainless steel 420

#### OPERATING DATA

• Flow	:	Upto 220 m³/h
• Head	:	Upto 44 m
• Outlet size	:	Upto 150 mm
• Liquid temp.	:	Upto 70°C

Note : Country specific voltage options available



Pumping Solutions, Engineered.

# VTP SERIES VERTICAL TURBINE PUMP

#### APPLICATIONS

- Raw water intake
- Fire fighting
- Municipal
- Irrigation
- Potable water Supply
- Pumping Station
- Cooling Water
- Power generation
- Drainage

#### SALIENT FEATURES

- Grease Lubricated, Heavy duty bearings
- Water deflector
- Stuffing box with packing / mechanical seal
- Fabricated/casted discharged head
- Above surface & Below surface options
- Flanged end fabricated column pipes
- Muff/Scrow coupling options
- Bearing holder for shaft support & alignment
- Cutless rubber / Bronze baring with self & oil lubricated system
- Cone pipe to facilitates smooth flow
- Replaceable fear rings
- Radial / Mixed flow enclosed impeller
- Flanged Bowl-Diffuser construction
- Larger immersed suction bell with ribs & bottom bearing
- Basket type strainer
- Maximum installation depth upto 30 mtrs
- Self water lubrication / Forced water lubrication / Oil lubrication
- Solid / Hollow shaft with non-reverse ratchet arrangement

#### OPERATING DATA

• Flow	:	Upto 10000 m³/h
• Head	:	Upto 200 m
• Outlet size	:	Upto 900 mm
• Liquid temp.	:	Upto 140°C*
• Pressure	:	Upto 25 bar
• MOC	:	CI, Bronze
Optional	:	CF8M/CD4 MCu

Note : \*Contact manufacturer for temp > 90° C



Pumping Solutions, Engineered.



**C.R.I. PUMPS**  
Pumping trust. Worldwide.



# VIC SERIES VERTICAL INLINE CLOSE COUPLED PUMP

COMMITMENT | RELIABILITY | INNOVATION

## APPLICATIONS

- Heating and Air conditioning system
- Pressure boosting
- Cooling system
- Industrial water supply

## SALIENT FEATURES

- Top pull out compact vertical pump where limited space is available
- Wide hydraulic ranges
- Stub shaft design minimize shaft deflection
- No need for coupling alignment

## OPERATING DATA

• Flow	:	Upto 620 m³/h
• Head	:	Upto 40 m
• Outlet size	:	Upto 200 mm
• Liquid temp.	:	Upto 120°C**
• Pressure	:	Upto 16 bar
• MOC	:	Cl, Bronze, SS

Note : \*\* Standard models upto 90°C , Contact manufacturer for high temperature



Wireless pump health  
monitoring features available



# VERTICAL MV SERIES

## MULTISTAGE INLINE PUMPS - MV SERIES-50Hz

## APPLICATIONS

- Industrial and Domestic pressure boosting
- Boiler feed
- Reverse Osmosis (RO)
- DM Plant
- Hot & Cold water and coolant circulation
- Industrial washing
- Fire Fighting systems
- Water supply in bulding and irrigation

## SALIENT FEATURES

- Stainless steel impellers , shaft and shaft sleeves
- All single phase motors are fitted with thermal motor protector
- Strengthened and cartridge seals
- Enhanced hydraulic efficiency
- Good compatibility and environment friendly
- Low noise leve and low vibratin level

## OPERATING DATA

• Flow	:	Upto 200 m³/h
• Head	:	Upto 320 m
• Liquid temp.	:	Upto 120°C
• Pressure	:	Upto 32 bar
• MOC	:	C.I, SS 304 & SS 316

Note : MH Pump model also available, for duty condition please contact manufacturer.



Wireless pump health  
monitoring features available



Pumping Solutions, Engineered.

# I-TECH SERIES SUBMERSIBLE WASTE WATER PUMPS - KC - SERIES



## APPLICATIONS

- Civil and Industrial applications
- Sewage stations and Industrial treatment plants
- Pumping sweag water from stock farm
- Tunnels and mines
- Water containing solids and viscous materials
- Heavy muds , raw or fermented sludge
- Manhole sewerage
- STP and Pumping from specific tanks

## SALIENT FEATURES

- High head
- Hi hydraulic efficiency
- Minimized risk of Clogging & minimum wear
- Wide free passage in single / multi channel impeller
- Double mechanical seal
- Bronze wear ring to maintain performanc
- Alloyed cast iron to increase resistance to wear
- H07RNF cables

## OPERATING DATA

• Flow	:	Upto 2500 m³/h
• Head	:	Upto 70 m
• Power	:	Upto 185 kW
• Solid handling size	:	Upto 165 mm
• Outlet Size	:	Upto 400 mm
• Liquid Temperature	:	Upto 40°C
• MOC	:	CAST IRON FG260 WITH 0.3 CU 0.3 NI 0.3MO MIN
Optional	:	Stainless Steel



## SUBMERSIBLE CUTTER PUMPS - GT SERIES

## APPLICATIONS

- Food industries
- Textile and agricultural irrigation
- Handling solid contained liquids in residential and commercial applications

## SALIENT FEATURES

- Cutter fixed to open impeller
- Non clogging pump
- Handling solids contained liquids in residential and commercial applications
- Thermal protection embedded irrigation
- Cut large piece solids into small pieces

## OPERATING DATA

• Flow	:	Upto 30 m³/h
• Head	:	Upto 60 m
• Power	:	Upto 9.5 kW
• Solid handling size	:	Upto 7 mm
• Outlet Size	:	Upto 50 mm
• Liquid Temperature	:	Upto 40°C
• MOC	:	CAST IRON FG260 WITH 0.3 CU 0.3 NI 0.3MO MIN
Optional	:	Stainless Steel



## MIXER / PROPELLER - MD & TP - SERIES

## APPLICATIONS

- Mixing up and handling of liquids with suspended solids
- Mixtures of high viscosity liquid and sludge
- Chemical industry
- Wells & Rainwater collection basin

## OPERATING DATA

• Flow	:	Upto 10000 m³/h
	:	(MD) Upto 3.4 kW
• Power	:	(TP) Upto 18.5 kW
	:	(AG) Upto 22 kW
• Liquid temp.	:	Upto 40°C*
• MOC	:	(Impeller-SS 316 ,SS 304), CAST IRON FG260 WITH 0.3 CU 0.3 NI 0.3MO MIN
Optional	:	Stainless Steel



Pumping Solutions, Engineered.



# FIRE FIGHTING SERIES

COMMITMENT | RELIABILITY | INNOVATION

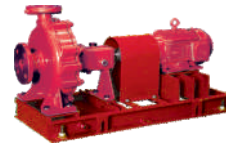
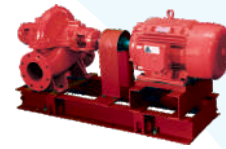
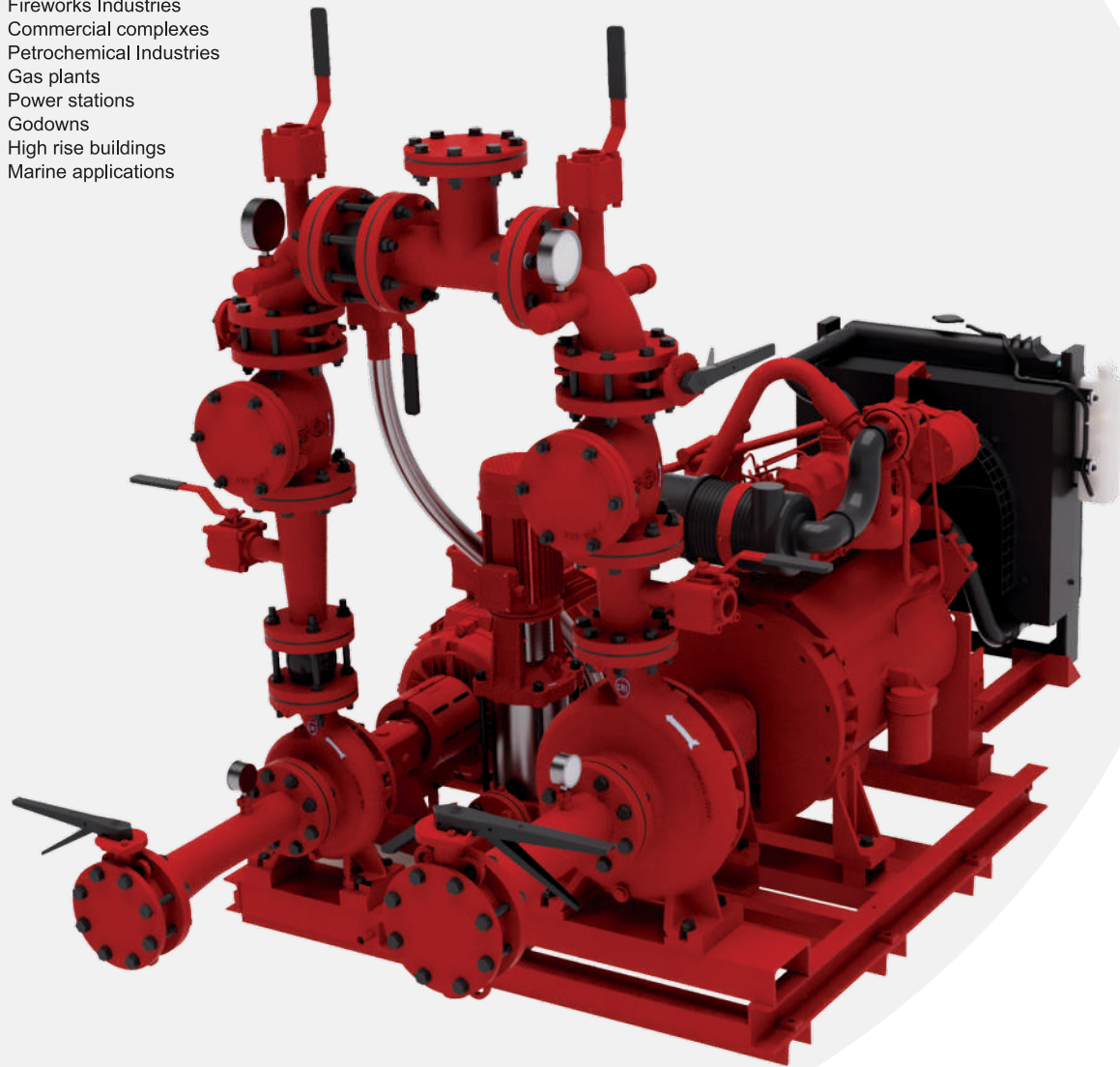
## END SUCTION / SPLIT CASING FIRE FIGHTING PUMPS

### CONFIGURATION

- End suction engine and motors driven fire fighting pumps
- Split casing engine and motors driven fire fighting pumps
- Vertical turbine pump
- Long coupled vertical inline pump

### APPLICATIONS

- Airports and ports
- Fireworks Industries
- Commercial complexes
- Petrochemical Industries
- Gas plants
- Power stations
- Godowns
- High rise buildings
- Marine applications



### SALIENT FEATURES

- In order to meet IS 12469 (1988) and specifications for Pumps to Fire Fighting System greater wear life
- Supplied in high-grade grey cast iron or ductile iron, carbon steel, and stainless steel alloys, and/or in combination of same on specific requirements



**C.R.I. FLUID SYSTEMS**

Pumping trust. Worldwide.



**C.R.I. PUMPS WINS THE  
NATIONAL ENERGY CONSERVATION  
AWARD 2018 FOR THE 4<sup>TH</sup> TIME**

BY WINNING THIS AWARD FOR THE 4TH TIME WE ARE REITERATING  
OUR COMMITMENT TOWARDS ECO-FRIENDLINESS!



- FORMIDABLE GLOBAL PLAYER • 120 COUNTRIES • INDIA'S TOP EXPORTER • 6000 PRODUCTS
- 20000 OUTLETS • 1500 SERVICE CENTRES

- C.R.I. is proud to offer the widest range of BEE 5 star-rated pumps for various Govt. projects across the world.
- Over 10lakh star-rated C.R.I. pumps installed across the country with savings of over 9000 million units of power.
- C.R.I. is the top supplier for the Government's EESL project to replace old high power consuming inefficient pumps.
  - C.R.I.'s acquisitions in UK and Italy has catalyzed it's global presence

Valves - Pumps - Pipes - IoT Drives & Controllers - Wires & Cables - Solar Systems - Motors



### C.R.I. FLUID SYSTEMS PRODUCTS CATER TO DIVERSE SEGMENTS

CHEMICAL & PROCESS | POWER | WATER & WASTE WATER | OIL & GAS | PHARMA | SUGAR & DISTILLERIES | PAPER & PULP  
MARINE & DEFENCE | METAL & MINING | FOOD & BEVERAGE | PETROCHEMICAL & REFINERIES | SOLAR | BUILDING  
HVAC | FIRE FIGHTING | AGRICULTURE & RESIDENTIAL

Toll free 1800 200 1234 | www.facebook.com/cripumps | www.crigroups.com

Pumping Solutions, Engineered.