



C.R.I. PUMPS

Pumping trust. Worldwide.

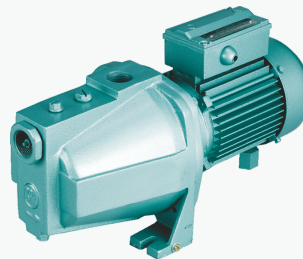


Centrifugal Jet Selfpriming Pumpsets

Shalo Series

C.R.I. Centrifugal jet self priming pumpsets pump casing and ejector unit are designed carefully to give the best possible hydraulic efficiency and good suction lift characteristics. These pumpsets are powered by a totally enclosed fan cooled AC induction motor, suitable for continuous duty. Motor stator is made of low watt loss ferro silicon steel laminations assembled under pressure and rigidly locked in the frame. The varnish impregnated windings made of enameled copper wire offer excellent resistance. Construction of motor frame and usage of quality materials result in high performance and low temperature raise, thereby increasing the life cycle of the motor.

Shalo
30 FT
Suction



SALIENT FEATURES

- 30 feet suction lifting capacity
- Specially designed for shallow well applications
- High operating efficiency resulting in lower power consumption
- Back pull - out design for easy servicing and repair
- Inbuilt thermal overload protector
- In-built non return valve
- Specially coated pumps available for fertigation application
- Powder coated colour motor body

APPLICATIONS : • Shallow well • Small farms • Domestic • Pressure boosting • Gardens • Fertigation • Drinking water supply

SPECIFICATIONS

SHALO SERIES

Power range	0.37 kW & 0.75 kW (0.5HP & 1.0HP)
Speed	2880 RPM
Version	Single phase 220 - 240V, 50Hz AC Supply
Maximum total head	47 metre
Maximum flow rate	3400 LPH (3.4 m³/hr)
Maximum suction lift	Upto 9 metre
Degree of protection	IP 54
Direction of rotation	Clockwise from driving end
Class of insulation	B
Type of duty	S1 (Continuous)
Method of starting	Permanent Split Capacitor (PSC)
Nominal Pumpset size (suction x delivery)	25 x 25 mm

PERFORMANCE CHART

SHALO SERIES

2880 RPM, At Rated Voltage - Single Phase - 220 - 240 Volts; 50Hz, A.C. Supply.

CENTRIFUGAL JET SELFPRIMING PUMPSETS

Model	kW	HP	Suction x Delivery in mm	m³/hr	0	0.6	0.8	1	1.4	1.8	2.2	2.6	3	3.4
					LPH	600	800	1000	1400	1800	2200	2600	3000	3400
Shalo 527	0.37	0.5	25x25	Head in Metres	37	34	32	31	28	25	22	20	16	
Shalo 525 / 526	0.37	0.5	25x25		39	35	34	33	30	27	24	20		
Shalo 1028	0.75	1	25x25		41	38	36	35	32	30	27	25	17	11
Shalo 1029	0.75	1	25x25		38	35	33	32	30	28	25	23	22	
Shalo 1025	0.75	1	25x25		46	42	40	39	36	33	30	26		
Shalo 1026	0.75	1	25x25		43	38	37	36	33	30	27	23	16	
Shalo 1027	0.75	1	25x25		39	35	34	33	30	27	24	20		

Shalo 526 - Noryl Impeller

Shalo Series - Specially designed for Fertigation application

Model	kW	HP	Suction x Delivery in mm	m³/hr	0	0.8	1	1.4	1.8	2.2	2.6
					LPH	800	1000	1400	1800	2200	2600
Shalo 725	0.55	0.75	25x25	Head in Metres	47	38	36	31	28	26	20

MATERIAL OF CONSTRUCTION - PUMPSET

Part Name	Material
Impeller	Cast iron / Noryl
Motor body	Aluminium
Shaft	SS-410
Bracket	Cast iron
Pump casing	Cast iron
Mechanical Seal	Carbon & Ceramic


C.R.I. PUMPS
 Pumping trust. Worldwide.