



C.R.I. PUMPS

Pumping trust... Worldwide.



ONE STOP PUMPING SOLUTION



Vision, Mission and Values

To be the industry leader providing best-in-class fluid management solutions to individual and institutional customers and societies in our chosen markets.

We will achieve this through our dedicated efforts to enhance the welfare of all our stakeholders and by living by our values of **Commitment**, **Reliability** and **Innovation**.



ABOUT US

COMMITMENT, RELIABILITY & INNOVATION

C.R.I. ranks high among the world's fastest-growing fluid management solution providers with a wide global presence. C.R.I. offers Pumps, Motors, IoT Driven Pumps, IoT Drives & Controllers, Pipes, Wires & Cables, Solar Pumps and Controllers to meet the pumping needs of its wide customer base.



60+ Years of
Engineering Expertise



120+ Countries have
our strong global presence



21+ Manufacturing
units around the World



30000+ Outlets
to serve our Customers



9000+ Products for
various applications



1500+ Service Centres
to support our Customers



16 Times EEPC Award
Winner of Export Excellence



8 Times NEC Award
Winner of Energy Savings



**Fludyn Advanced
Technology Centre**

Recognized by Ministry of
Science & Technology, Govt. of India.

C.R.I. PIPES - C.R.I.'s state-of-the-art manufacturing facility at Ahmedabad & Hosur produces all kinds of best quality PVC, UPVC, CPVC Pipes & Fittings. The plants are empowered with fully automated machines that control the manufacturing process.

C.R.I. WIRES & CABLES - C.R.I.'s Wires & Cables are manufactured at its state-of-the-art manufacturing facility. The systems at the manufacturing facility are ISO-9001 certified and the products manufactured to meet the relevant standards.

C.R.I. SOLAR PUMPING SYSTEM - C.R.I. manufactures sustainable Solar Pumping Systems designed to work with best in class efficiency. With this C.R.I. emphasizes its focus towards greener technology.

C.R.I. Selfpriming Monoblock Pumpsets

Salient Features

- Sturdy and compact
- In-built with T.O.P
- Double shielded ball bearing, so no need of external lubrication
- Powder coated motor body
- High durability.

Specifications

Power range	0.37 kW & 0.75 kW (0.5HP & 1 HP)
Version	Single Phase, 220-240V, 50 Hz, AC Supply
Speed in RPM	2880
Maximum Total Head	45 Mtr
Maximum Flow Rate	4500 LPH
Maximum Suction Lift	upto 8 Mtrs
Nominal Pumpset Size	25 x 25 mm



Performance Chart

Model	kW	HP	Type	Suction x Delivery in mm	Suction Capacity in mtrs	Total Head in metre / feet												
						6	8	10	12	15	18	21	25	28	30	35	40	45
						20	26	33	39	49	59	69	82	91	98	115	131	148
						Discharge in LPH												
DINO SM53	0.37	0.5	SELF PRIMING	25 x 25	8	2100	1928	1802	1557	1372	1030	824	600					
DINO SM54	0.37	0.5	SELF PRIMING	25 x 25	8	3150	2950	2808	2600	2448	2200	2088	1800		1500			
DINO SM55	0.37	0.5	SELF PRIMING	25 x 25	8	1985	1795	1625	1475	1250	1050	815	485					
DINO SMEP50	0.37	0.5	SELF PRIMING	25 x 25	8	1975	1780	1625	1490	1280	1030	915	480	240				
DINO SMEP55	0.37	0.5	SELF PRIMING	25 x 25	8	1975	1780	1625	1490	1280	1030	915	480	240				
DINO SMRP50	0.37	0.5	SELF PRIMING	25 x 25	8	3025	2830	2740	2500	2220	2000	1740	1500		1010	525		
DINO SM103	0.75	1	SELF PRIMING	25 x 25	8	3100	3000	2900	2700	2600	2480	2350	2196		1980	1728	1368	
DINO SME100	0.75	1	SELF PRIMING	25 x 25	8	2965	2730	2520	2330	2050	1755	1410	950	615	300			
DINO SMEP100	0.75	1	SELF PRIMING	25 x 25	8	3000	2780	2520	2320	1980	1610	1320	860	430	215			
DINO SMEP105	0.75	1	SELF PRIMING	25 x 25	8	3000	2780	2520	2320	1980	1610	1320	860	430	215			
DINO SMRP100	0.75	1	SELF PRIMING	25 x 25	8	4500	4320	4215	4180	3960	3600	3530	3315		2780	2090	1610	560

C.R.I. Regenerative Selfpriming Monoset Pumpsets

Salient Features

- Good suction lifting characteristics.
- Silent operation.
- Accurate functions of centrifugal governor & switch ensures longer life of the motor.

Specifications

Power range	0.37 kW & 0.75 kW (0.5HP & 1HP)
Version	Single Phase, 220-240V, 50 Hz, AC Supply
Speed in RPM	1440
Maximum Total Head	51 Mtr
Maximum Flow Rate	3840 LPH
Maximum Suction Lift	Upto 8 Mtr
Nominal Pumpset Size	25 x 25 mm



Performance Chart

Model	kW	HP	Suction x Delivery in mm	Suction Capacity in mtrs	Speed	m³/hr	0	0.61	0.8	1.01	1.4	1.8	2.2	2.6	3.0	3.38	3.82
							0	600	780	1020	1380	1800	2220	2580	3000	3360	3840
DINO SP56	0.37	0.5	25 x 25	8	1440	Head in Metres	31	28	27	25.5	23	19.5	16	13	9		
DINO SP57	0.37	0.5	25 x 25	8	1440		31	28	27	25.5	23	19.5	16	13	9		
DINO SP107	0.75	1	25 x 25	8	1440		51		45	42.5	39	37	33	28	20	14	13
DINO SP108	0.75	1	25 x 25	8	1440		51		45	42.5	39	37	33	28	20	14	13

C.R.I. Horizontal Openwell Submersible Pumpsets

Salient Features

- Enhanced motor design ensures higher cooling effect.
- High operating efficiency resulting in low power consumption.
- Anti corrosive stainless steel motor body.
- No priming issue.

Specifications

Power range	0.37 kW & 0.75 kW (0.5HP & 1HP)
Version	Single Phase, 220-240V ,50 Hz, AC Supply
Speed in RPM	2880
Maximum Total Head	32 Mtr
Maximum Flow Rate	10080 LPH
Nominal Pumpset Size	25 x 25 mm



Performance Chart

Model	kW	HP	Suction x Delivery in mm	m ³ /hr	0	1	1.8	2.7	3.6	4.5	4.68	5.4	5.55	6.48	7.2	7.4	7.56	7.74	8.64	9.36	10.1
				lph	0	1080	1800	2700	3600	4500	4680	5400	5544	6480	7200	7380	7560	7740	8640	9360	10080
DINO S050	0.37	0.5	25 x 25	Head in Metres	17		16.5	16	15	14.5	14	13.5	13	12	11	10	9	8.5	8		
DINO S0101	0.75	1	25 x 25		32		28	25.5	24.5	24	23.5	23	22	21.5	21	20.5	20	19.5	18.5	18	13

C.R.I. Centrifugal Jet Selfpriming Pumpsets

Salient Features

- 30ft suction lifting capacity.
- Specially designed for shallow well application.
- Compact design occupies less space.

Specifications

Power range	0.37 kW & 0.75 kW (0.5HP & 1HP)
Version	Single Phase, 220-240V, 50 Hz, AC Supply
Speed in RPM	2880
Maximum Total Head	39 Mtr
Maximum Flow Rate	2600 LPH
Maximum Suction Lift	upto 9 Mtrs
Nominal Pumpset Size	25 x 25 mm

Performance Chart

Model	kW	HP	Suction x Delivery in mm	m ³ /hr lph	0	0.6	0.8	1	1.4	1.8	2.2	2.6
					0	600	800	1000	1400	1800	2200	2600
DINO JS51	0.37	0.5	25 x 25	Head in Metres	36	32	30	29	27	25	23	20
DINO JS102	0.75	1	25 x 25		39	35	34	33	31	29	27	25
DINO JS103 SS	0.75	1	25 x 25		39	35	34	33	31	29	27	25



30^{FT}
Suction



C.R.I. i-Smart Selfpriming Monoblock Pumps

Salient Features

- Automatic ON & OFF • Mobile App through pump operation
- In-built water level monitor • Scheduled run in real time • Dry run, Overload, High & Low voltage protection.

Applications

- Household water applications • Small Garden • Civil application
- Pressure boosting system.

Specifications

Power Range	0.5HP & 1 HP (0.37kW & 0.75kW)
Maximum Head	30 Metre
Maximum Flow	3050 LPH
Version	Single Phase 220 V, 50 Hz, AC Supply
Nominal Pumpset Size	25 x 25 mm



C.R.I. i-Smart
Mobile App

C.R.I. Pressure Booster System

Salient Features

- Ensures even pressure at all the water outlets • Automatic pump ON & OFF operation based on water consumption • In-built thermal overload protector • Lesser running cost than the conventional systems
- Factory tested system and supplied as a package.

Applications

- House Watering system • Industries • Hotels • Hospitals • Apartments.

Specifications

	BRISK & MHBS	TINY FORCE
Power ranges upto	1.5HP	1HP
Flow upto	8 m ³ /hr	3.06 m ³ /hr
Maximum pressure	5.5 bar	3.5 bar
Liquid temperature upto	90°C*	33°C

* Applicable only for Special Mechanical Seal



BRISK



MHBS



TINY
FORCE

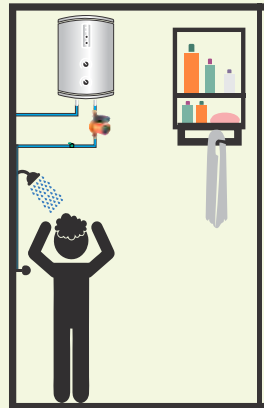
C.R.I. Circulatory Pumps

Salient Features

- Designed with Auto and Manual function • Silent operation
- Corrosion free parts for hygiene • Easy for installation & service

Specifications

Liquid temp. range	-5°C to +110°C
Max. Operating Pressure	10 bar
Version	Single phase 230 V, 50 Hz, A.C. Supply
Insulation Class	F
Max. Head	12 mtrs
Max. Discharge	3.1 m ³ /hr



C.R.I. Automatic Pump Controller

Salient Features

- Maintain even water pressure at all outlets.
- Automatic ON & OFF operation of the pump.
- Specially designed for space constraint area.
- Dry run protection.

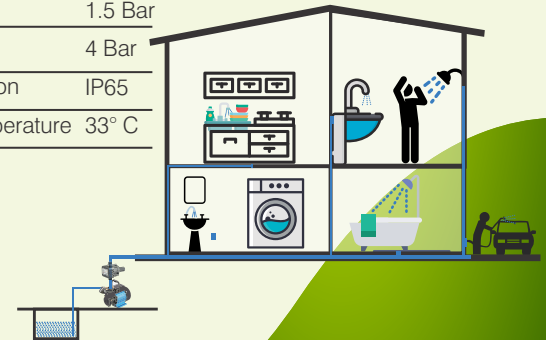
Application

- House Watering Systems • Car Washing
- Gardens • Fountains



Specifications

Version	Single Phase, 220 - 240V, A.C. Supply, 50Hz
Max Working Pressure	10 Bar
Cut In Pressure	1.5 Bar
Cut Off Pressure	4 Bar
Degree of Protection	IP65
Max Working Temperature	33° C



C.R.I. Wastewater Submersible Pumps

Salient Features

- Non clogging impellers ensures free flow of solids
- Cutter design yields fine solids for non clogging operation
- Corrosion resistant Stainless Steel 304 Grade Pump portion ensures longer life
- Motor is designed with Self Cooling Effect
- Epoxy Potted water proof cables
- Prevention from dry run
- Automatic ON/OFF operation, enabled by adjustable float switch.

Applications

- Draining sewage/Drainage water from hotels, houses, commercial buildings, complexes etc
- Pumping waste water in industries
- Pumping municipal sewage water
- Septic tanks
- Emptying of flooded Cellar water.



Specifications

MS & MP Series

DL - Series

Power Range		0.55&0.75kW(0.75&1 HP)	0.55-1.5kW (0.75-2 HP)
Delivery Size (mm)		32, 40mm	32, 50mm
Impeller Type		Closed Multi Channel	Closed Multi Channel Semi Open Double Channel
Max. Head		8.2 mtr	20 mtr
Max. Flow		10 m³/hr	25.2 m³/hr
Solid handling capacity		Upto 25mm	
Speed		2900 rpm	
Version	1Ø	230V - 50Hz A.C. Supply	
	3Ø	380 - 415V - 50Hz A.C. Supply	
Motor Type		Dry - type	

Specifications

SL - Series

SLC - Series

Power Range		0.55-2.2kW (0.75-3 HP)	1.1&1.8 kW (1.5&2.4 HP)
Delivery Size (mm)		40, 50, 65mm	50, 80mm
Impeller Type		Vortex	Vortex Semi Open Double Channel
Max. Head		18.1 mtr	12 mtr
Max. Flow		43.2 m³/hr	20 m³/hr
Solid handling capacity		Upto 55mm	
Speed		2900 rpm	
Version	1Ø	230V - 50Hz A.C. Supply	
	3Ø	380 - 415V - 50Hz A.C. Supply	
Motor Type		Dry - type	

C.R.I. Selfpriming Non-Clog Monoblock Pumps

Salient Features

• Non clogging impellers ensures free flow of solids • Solid Handling capacity upto 15.5mm • Quick automatic Self-priming function-no need for footvalve • Back-pull out type for easy maintenance • Efficient pumps with more energy savings.

Specifications

Power range	0.75kW - 3.7kW (1HP - 5HP)
Maximum head	24 meter
Maximum flow rate	1050 lpm
Type of Duty	S1 (Continuous)
Versions	1Ph 200-240V / 3Ph 380-415V, 50Hz, A.C. Supply
Sealing	SMB 140 Mechanical seal arrangement, SMB 240,350 & 580 Stuffing box arrangement



SMB Series

C.R.I. Stainless Steel Self Priming Monoblock Pumpsets

Salient Features

• Corrosive resistant pump parts to ensure longer life • Optimized hydraulic design for efficient performance • Smooth surface finish results in friction free flow of fluid • Best suitable for saline water.

Specifications

Power range	0.5HP (0.37 kW) and 1HP (0.75 kW)
Maximum head	6 to 30 metre
Maximum flow rate	700 LPH to 3000 LPH
Versions	Single Phase 220V, 50Hz, AC supply
Delivery Size	25 x 25 mm



STEELIX
MINI

C.R.I. Flat Cables

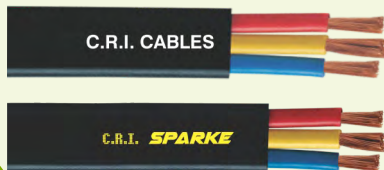
Salient Features

- High ageing property • Low conductor resistance • High insulation resistance • Excellent weather resistant • Double Layer Protection • Resistant to oils, chemicals, ozone & solvents • Cut, tear & abrasion resistant Flame resistant • Assured by 99.97% E.C. Grade Copper

Specifications

Voltage Grade	1100 V - AC Supply
Temperature Range	-10°C to +70°C
Conductor	High conductivity annealed copper
Insulation Material	Flexible water proof PVC
Sheath Material	Flexible water proof PVC
Sheath Colour	Black*
Core Colours	Red, Yellow & Blue
Available Size	1.0mm ² to 50.0mm ²

*Any other sheath color as agreed between the purchaser & supplier



IS : 694



CM/L - 3406447

C.R.I. uPVC Column, HDPE, RPVC & Casing Pipes & Accessories

Salient Features

- UV Resistant • Strong & Light Weight • Fire Resistant • Easy to install • Corrosion & Chemical Resistant • Cost Effective

Specifications

uPVC Column	33mm to 140mm (Bell & Coupler Type)
RPVC	20mm to 400mm
HDPE	20mm to 630mm
Casing & Screen	40mm to 300mm
Grey Casing	110mm to 250mm
SDR Casing	110mm to 225mm



C.R.I. Air Break Starter

Salient Features

• Heavy duty contactor for trouble free switching operation • High Mechanical & Electrical durability • Specially designed overload relay for reliable overload protection • Encapsulated coil to withstand wide voltage fluctuations.

Specifications

Relay Range	2.5 Amps to 32 Amps
Rated Operational Voltage	200-440V, 50Hz 3 phase
Contactor	4 pole
Wide band of Operating Voltage	70% to 110% of rated coil voltage
Pick-up Voltage	Minimum 70% of coil rating
Ambient Temperature	-25° C to +55° C



C.R.I. Panel Box

Salient Features

- Smooth and safe start
- Digital LED Display
- Compact Design
- Heavy duty Panel
- Effective Over Load Protection

Application

- Domestic • Washing Gardens • Civil Applications
- Drinking Water Supply

Specifications

Power Range	0.37kW (0.5HP) to 1.5kW (2HP)
Contactor	2 Pole
Rated Operating Voltage	240 V, 50 Hz Supply





C.R.I. PUMPS

Pumping trust... Worldwide.



☎ TOLL FREE **1800 121 1243** 🌐 www.crigroups.com

📱 www.facebook.com/cripumps 💬 chatbot : **+91 9500401115**